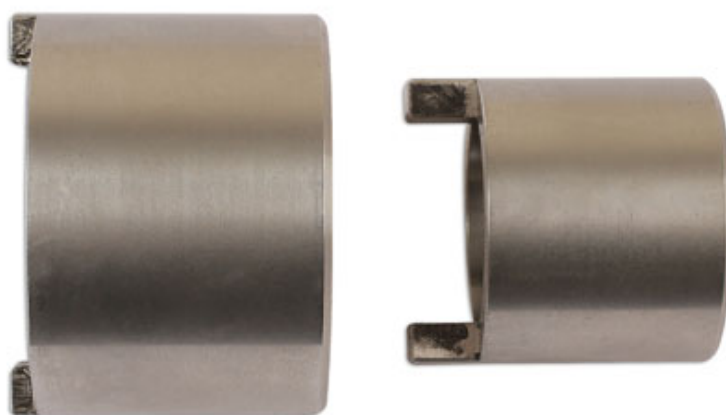


Single Sided Swinging Arm Service Set 2pc - for Triumph

1/2"D, 2 toothed swing arm socket set for tightening/loosening swing arm nuts.



Additional Information

- Applications: Triumph Daytona T595 955i (1997 - 2006), Speed Triple 1050 (2005 - 2015), Speed Triple 885 (1997 - 1999), Speed Triple 955 (1999 - 2004), Sprint GT (2010 - 2015), Sprint RS (1999 - 2004), Sprint ST (1999 - 2015).
- For fitting and adjusting the rear swinging arm pivot as fitted to single sided swinging arm Triumph motorcycles.
- Equivalent to OEM T3880290 for inner socket; swinging arm clamp: 34mm diameter.
- Equivalent to OEM T3880295 for outer socket; swinging arm lock ring: 46.5mm diameter.
- Manufactured from Stainless Steel.

<http://lasertools.co.uk/product/6278>

